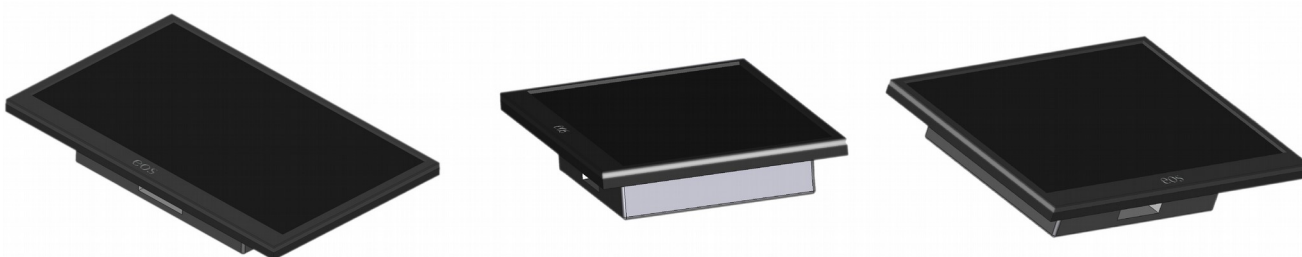




EOS 100 is the flexible room control platform. The system enables communication with most of the office/home/factory devices and gives the opportunity to centralise the room management. The device provides the powerful hardware that makes the platform quick responsive and yields the opportunity to add customer demand software. Furthermore, the internet connection (wireless or ethernet) permits to access the system (e.g., the management console) via public or private internet network (depends on settings). Thus the console can be available on notebooks, smartphones or tablets.

EOS 100 is the device that can be customised according to functional, technical and design demands. This customization makes EOS special.



Features in standard configuration:

- large and high quality capacitive touch screen (1280x800, 10.1),
- 1,8 GHz processor with 4 cores,
- H.264/H.265 (i.a., HD, UHD),
- 802.11 b/g/n
- 2 GB two channel DDR3 RAM,
- graphic processor,
- HD voice,
- audio in/out,
- two RS-232,
- two relays,
- two IR/serial ports,
- two UART (TTL),
- PoE supply (IEEE 802.3af),
- server on board,
- wall box with easy hide cable technology.

The extra software related or hardware related functions as additional ports, extra large display, HDMI out, calendar, room booking, display via USB are available per request. If you have any special request please contact us: office@mwtrade.com.

The device is assembled in Poland.

The distributor: MW International Trade sp. z o. o., Warsaw, Poland.

Sisotech is the MW International Trade sp. z o.o. Research and Development Department.



**INTERNATIONAL
TRADE**